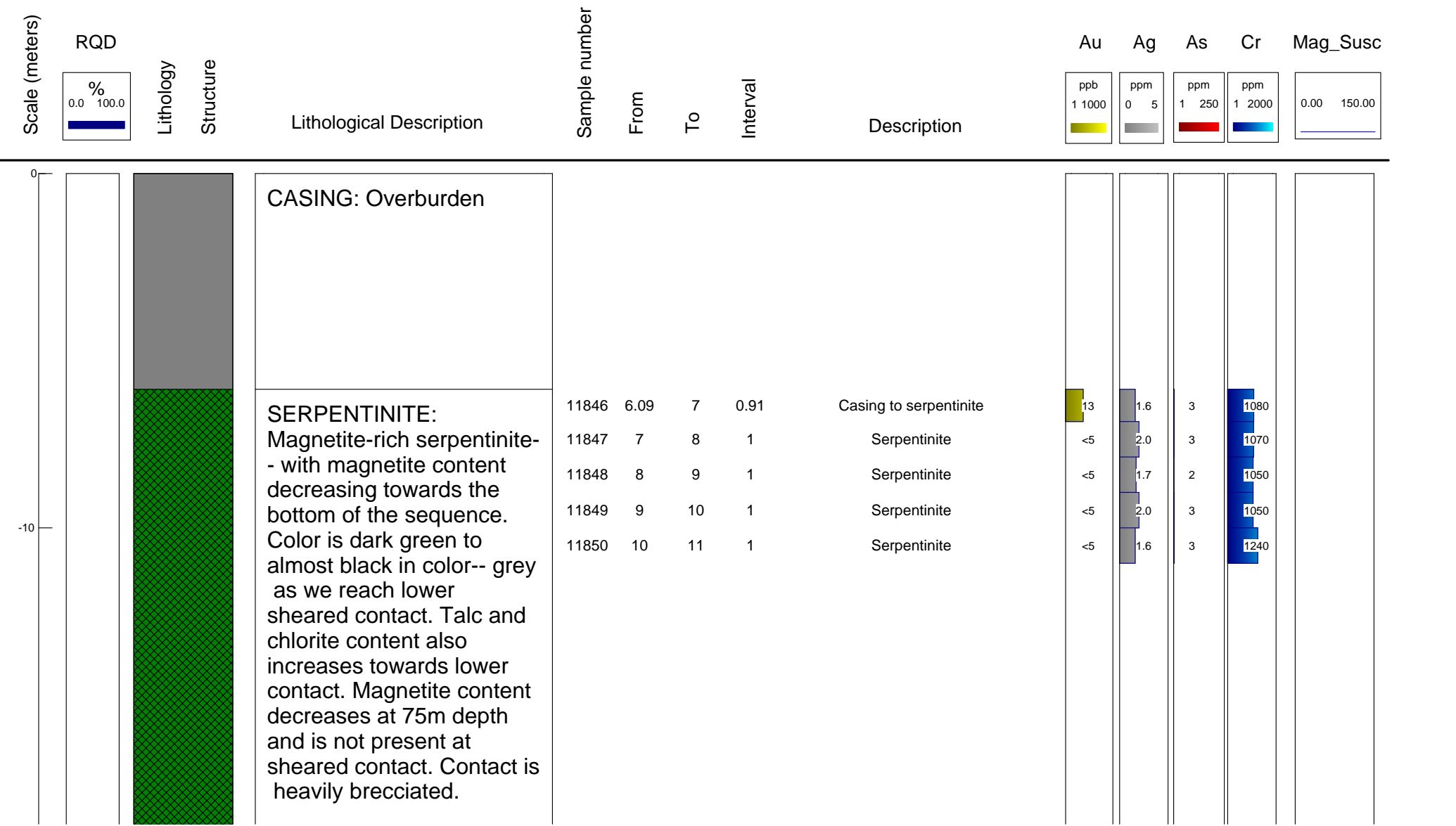


Easting :544039Azimuth :48

Northing :6691286Dip :-50

Elevation :683Total Depth :145.69



Easting :544039Azimuth :48

Northing :6691286Dip : -50

Elevation :683Total Depth :145.69



Easting :544039Azimuth :48

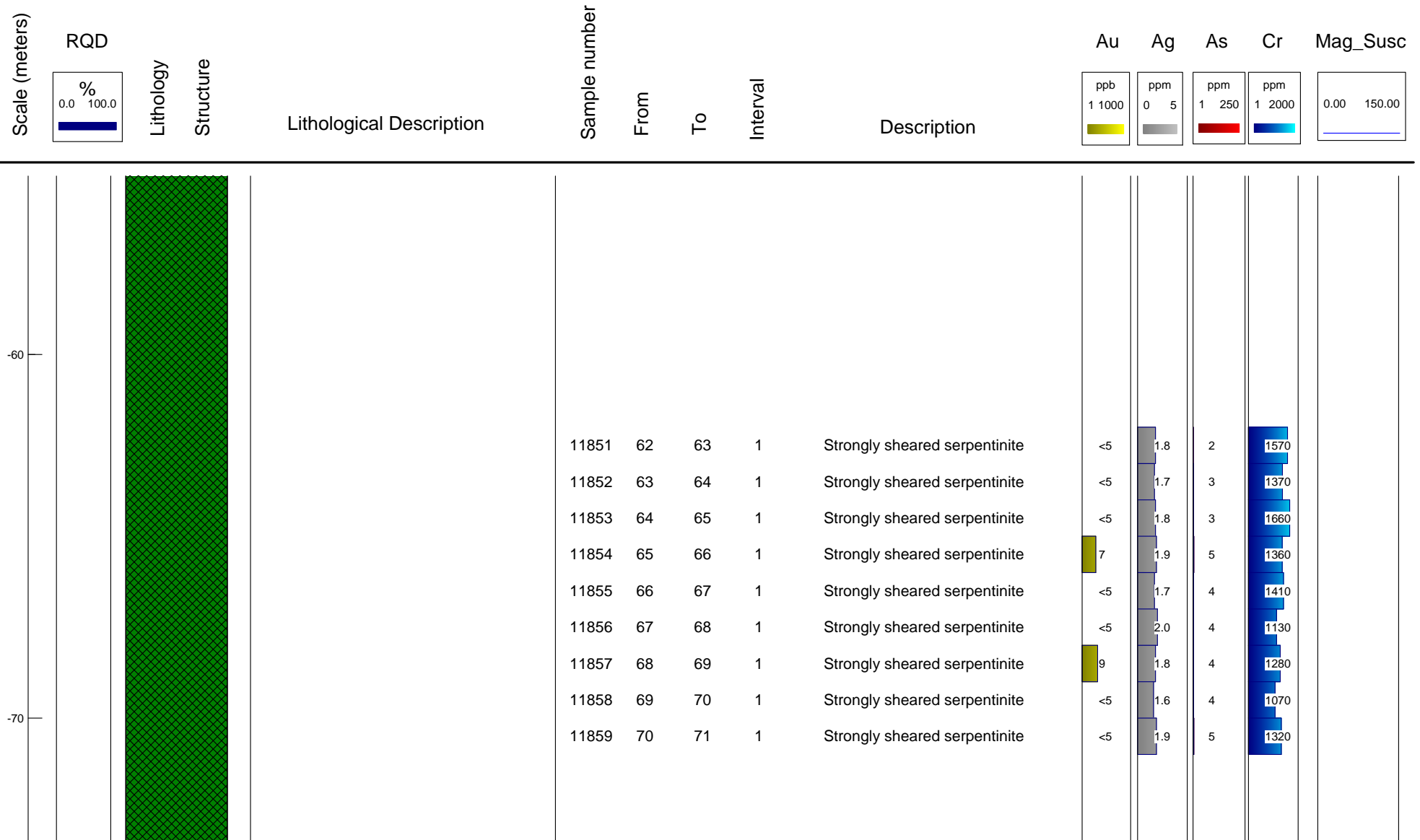
Northing :6691286Dip :-50

Elevation :683Total Depth :145.69



Easting :544039
Northing :6691286
Elevation :683

Azimuth :48
Dip :-50
Total Depth 145.69



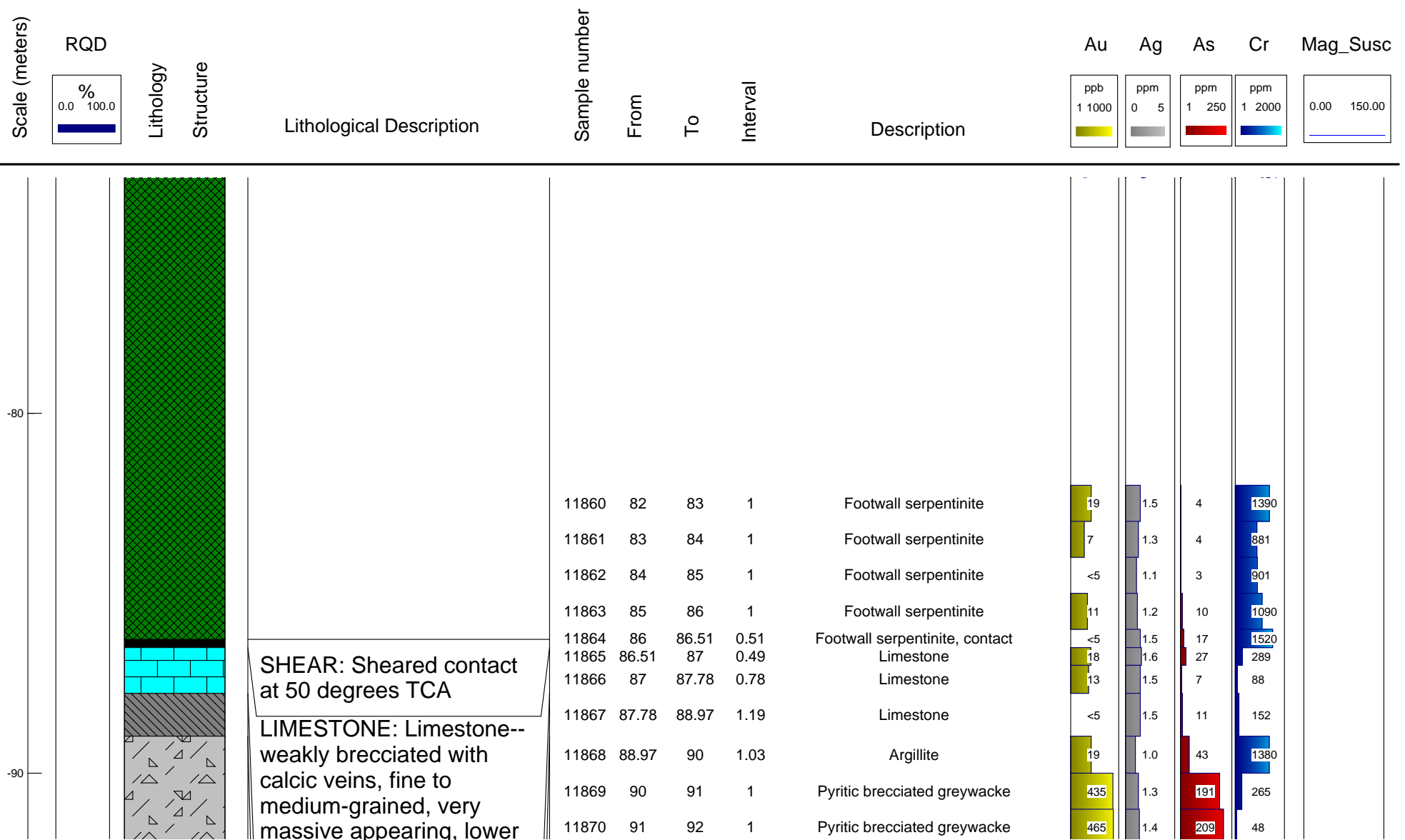
Total hole depth: 145.69

Logged by: Stephan Ruest



Easting :544039
Northing :6691286
Elevation :683

Azimuth :48
Dip :-50
Total Depth 145.69



Total hole depth: 145.69

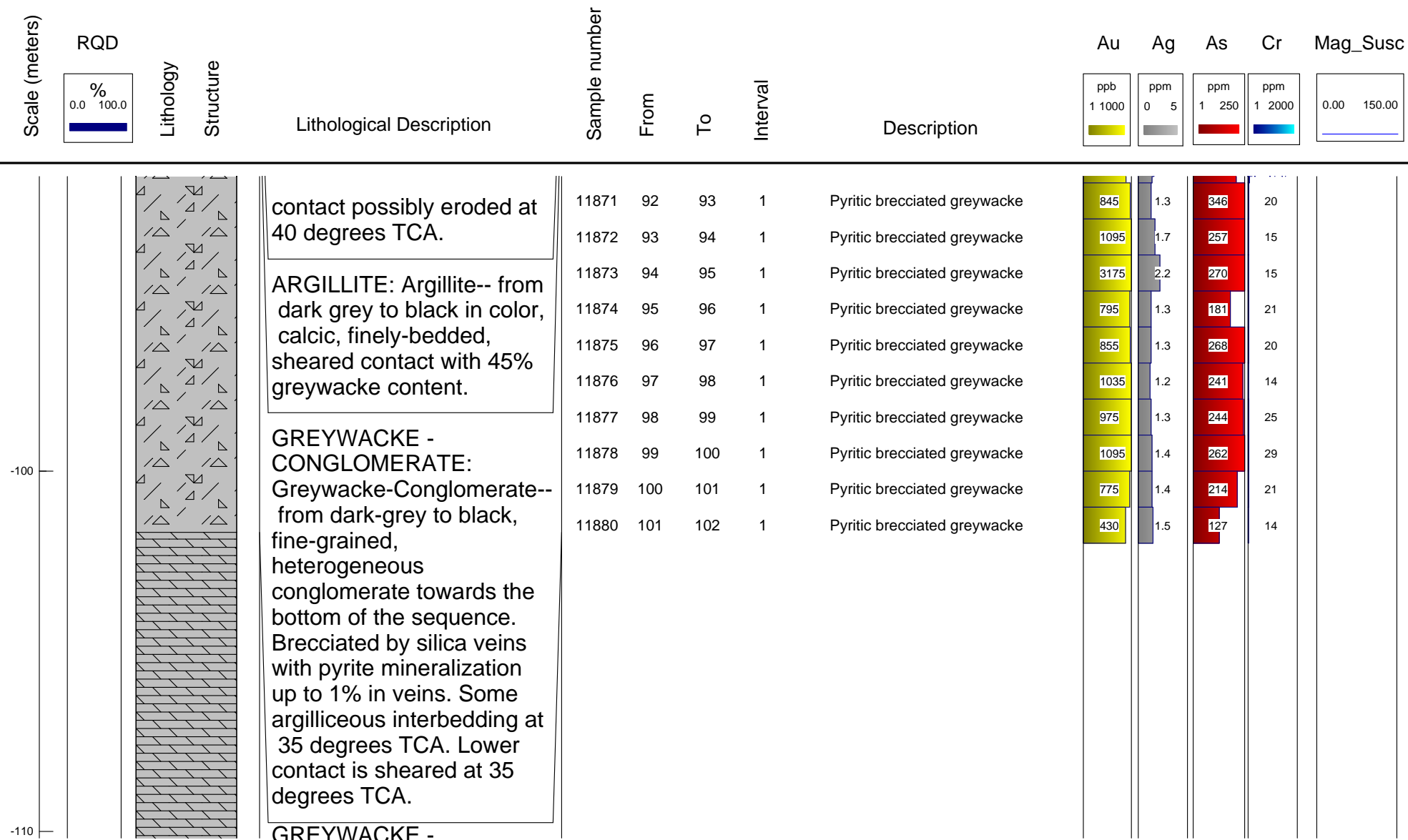
Logged by: Stephan Ruest



Easting :544039Azimuth :48

Northing :6691286Dip :-50

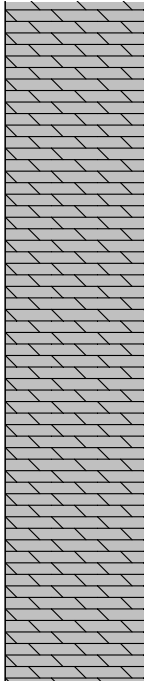
Elevation :683Total Depth :145.69



Easting :544039Azimuth :48

Northing :6691286Dip :-50

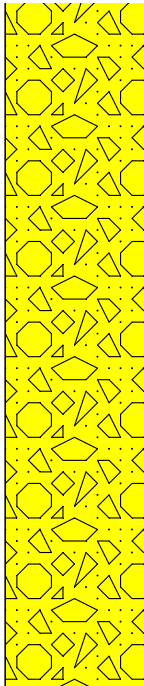
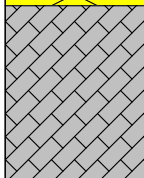
Elevation :683Total Depth :145.69

Scale (meters)	RQD	Lithology	Structure	Lithological Description	Sample number	From	To	Interval	Description	Au	Ag	As	Cr	Mag_Susc
	<div><div>%</div><div>0.0100.0</div></div>									<div>ppb</div> <div>11000</div> <div></div>	<div>ppm</div> <div>05</div> <div></div>	<div>ppm</div> <div>1250</div> <div></div>	<div>ppm</div> <div>12000</div> <div></div>	<div>0.00150.00</div>
-120				ARGILLITE: Greywacke--with interbedded argillite--fine-grained with pale grey sandstone, very competent and very solid in texture. Interbedded gradually with dark argillite with calcic laminations at 35 degrees TCA. Some pyrrhotite mineralization associated with bedded argillite. Lower contact with conglomerate at 35 degrees TCA.										
			CONGLOMERATE: Heterogeneous conglomerate-- immature conglomerate with large angular fragments. Clasts are sandstones, limestones, argillites and											

Easting :544039Azimuth :48

Northing :6691286Dip :-50

Elevation :683Total Depth :145.69

Scale (meters)	RQD	Lithology	Structure	Lithological Description	Sample number	From	To	Interval	Description	Au	Ag	As	Cr	Mag_Susc
	<div><div>%</div><div>0.0100.0</div></div>									<div>ppb</div> <div>11000</div> <div></div>	<div>ppm</div> <div>05</div> <div></div>	<div>ppm</div> <div>1250</div> <div></div>	<div>ppm</div> <div>12000</div> <div></div>	<div>0.00150.00</div>
-130				some volcanics. The unit has relatively minor vein content. Lower contact with dark greywacke at 25 degrees TCA.										
-140				GREYWACKE: Greywacke-- fine-grained dark unit with some medium-grained quartz clasts.										